



RV - Cycloidal Gear Components



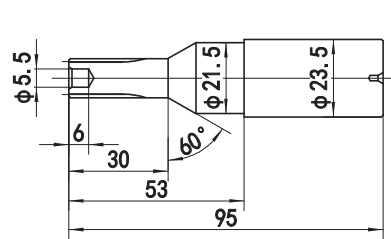
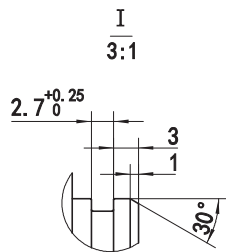
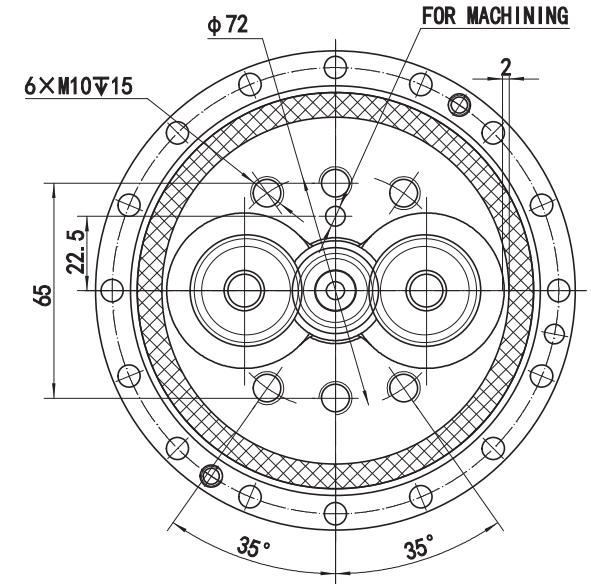
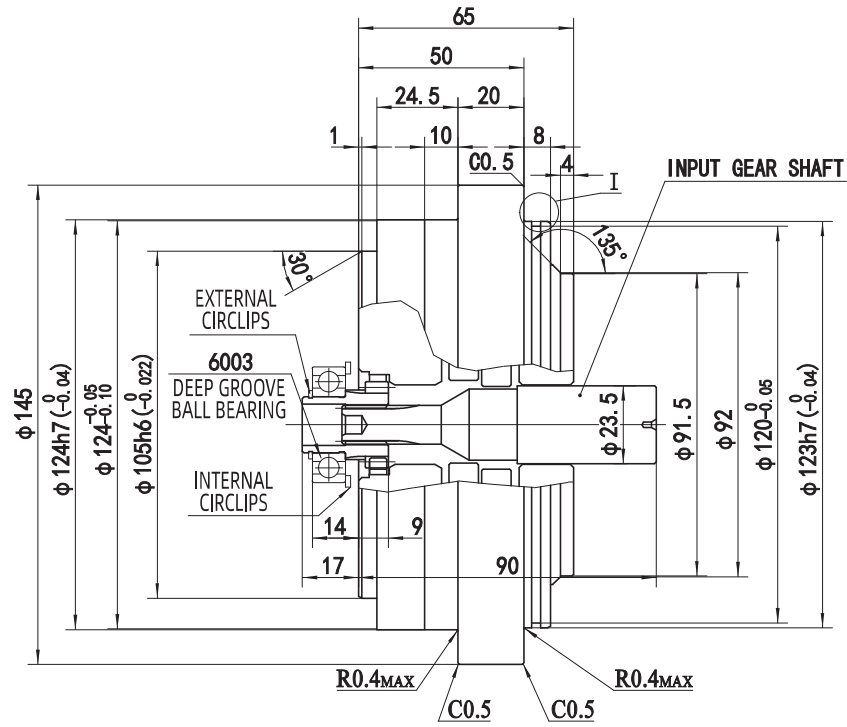
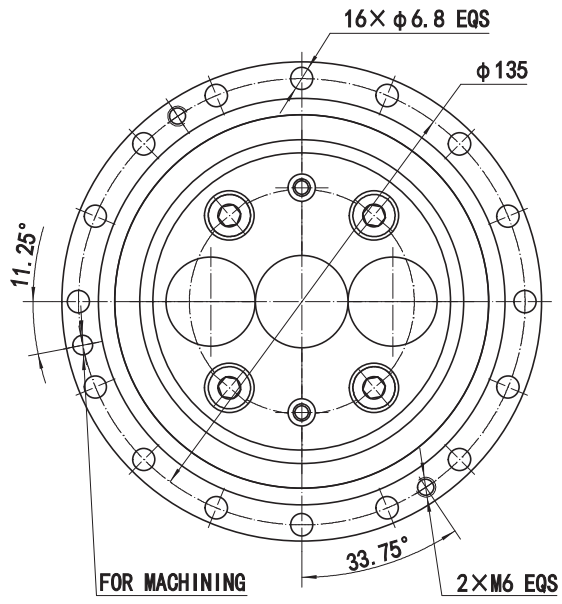
Model	Output Speed r/min			5	10	15	20	25	30	40	50	60
	Speed Ratio	Speed ratio		Output Torque Nm input Power kW								
		Shaft speed	casing speed									
20E	57	57	56	231 0.16	188 0.26	167 0.35	153 0.43	143 0.5	135 0.57	124 0.70	115 0.81	110 0.92
	81	81	80									
	105	105	104									
	121	121	120									
	141	141	140									
40E	161	161	160	572 0.40	465 0.65	412 0.86	377 1.05	353 1.23	334 1.40	307 1.71	287 2.00	271 2.27
	57	57	56									
	81	81	80									
	105	105	104									
	121	121	120									
80E	153	153	152	1088 0.76	885 1.24	784 1.64	719 2.01	672 2.35	637 2.67	584 3.26	546 3.81	517 4.33
	57	57	56									
	81	81	80									
	105	105	104									
	121	121	120									
110E	153	153	152	1499 1.05	1215 1.70	1078 2.26	990 2.76	925 3.23	875 3.67	804 4.49		
	81	81	80									
	111	111	110									
	161	161	160									
160E	175	1227/7	1220/7	2176 1.52	1774 2.48	1568 3.28	1441 4.02	1343 4.69	1278 5.34			
	81	81	80									
	101	101	100									
	129	129	128									
	145	145	144									
320E	171	171	170	4361 3.05	3538 4.94	3136 6.57	2881 8.05	2695 9.41	2548 10.7			
	81	81	80									
	101	101	100									
	118.5	118.5	117.5									
	129	129	128									
	141	141	140									
320E3	171	171	170	4361 3.05	3538 4.94	3136 6.57	2881 8.05	2695 9.41	2548 10.7			
	81	81	80									
	101	101	100									
	118.5	118.5	117.5									
	129	129	128									
	141	141	140									
	171	171	170									
	185	185	184									
201	201	200										
450E	185	185	184	6135 4.28	4978 6.95	4410 9.24	4047 11.3	3783 13.2				
	81	81	80									
	101	101	100									
	118.5	118.5	117.5									
	129	129	128									
	154.8	2013/13	2000/13									
171	171	170										
	192	1347/7	1340/7									

Remarks: (1)The rated torque is the output torque of the output speed of 15r/min,which is the basis for calculating the service life.
(2)The maximum speed of the input shaft must not be greater than the allowable maximum output speed multiplied by the speed ratio. If you need a speed ratio other than the above speed ratio,please consult our company.

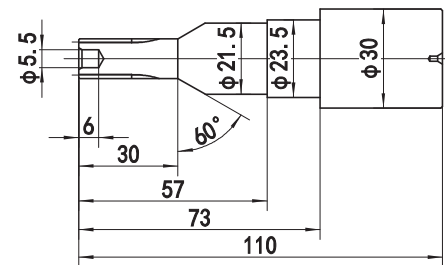


Maximum Allowable Output Speed r/min	Allowable Acceleration/Deceleration Torque N·m	Momentary Maximum Allowable Torque N·m	Allowable Bending Moment N·m	Momentary Maximum Allowable Bending Moment N·m	Torsional Rigidity N·m/arcmin	Maximum Lost Motion arcmin	Backlash arcmin	Angle Transfer Error arcsec	Allowable Radial Load N	Moment of Inertia Kg·m ²	Rated life h	Weight Kg
75	412	833	882	1764	49	1.0	1.0	70	7785	9.66 × 10 ⁻⁶	6000	4.7
										6.07 × 10 ⁻⁶		
										4.32 × 10 ⁻⁶		
										3.56 × 10 ⁻⁶		
										2.88 × 10 ⁻⁶		
2.39 × 10 ⁻⁶												
70	1029	2058	1666	3332	108	1.0	1.0	60	11594	3.25 × 10 ⁻⁵	6000	9.3
										2.20 × 10 ⁻⁵		
										1.63 × 10 ⁻⁵		
										1.37 × 10 ⁻⁵		
1.01 × 10 ⁻⁵												
70	1960	3920	2156	4312	196	1.0	1.0	50	12988	8.16 × 10 ⁻⁵	6000	13.1
										6.00 × 10 ⁻⁵		
										4.82 × 10 ⁻⁵		
										3.96 × 10 ⁻⁵		
2.98 × 10 ⁻⁵												
50	2695	5390	2940	5880	294	1.0	1.0	50	16648	9.88 × 10 ⁻⁵	6000	17.4
										6.96 × 10 ⁻⁵		
										4.36 × 10 ⁻⁵		
3.89 × 10 ⁻⁵												
45	3920	7840	3920	7840	392	1.0	1.0	50	18587	1.77 × 10 ⁻⁴	6000	26.4
										1.40 × 10 ⁻⁴		
										1.06 × 10 ⁻⁴		
										0.87 × 10 ⁻⁴		
0.74 × 10 ⁻⁴												
35	7840	15680	7056	14112	980	1.0	1.0	50	28067	4.83 × 10 ⁻⁴	6000	44.3
										3.79 × 10 ⁻⁴		
										3.15 × 10 ⁻⁴		
										2.84 × 10 ⁻⁴		
										2.54 × 10 ⁻⁴		
										1.97 × 10 ⁻⁴		
1.77 × 10 ⁻⁴												
25	7840	15680	7840	15680	1078	1.0	1.0	50	30165	4.83 × 10 ⁻⁴	10000	47
										3.79 × 10 ⁻⁴		
										3.15 × 10 ⁻⁴		
										2.84 × 10 ⁻⁴		
										2.54 × 10 ⁻⁴		
										1.97 × 10 ⁻⁴		
										1.77 × 10 ⁻⁴		
1.88 × 10 ⁻⁴												
25	11025	22050	8820	17640	1176	1.0	1.0	50	30133	8.75 × 10 ⁻⁴	6000	66.4
										6.91 × 10 ⁻⁴		
										5.75 × 10 ⁻⁴		
										5.20 × 10 ⁻⁴		
										4.12 × 10 ⁻⁴		
										3.61 × 10 ⁻⁴		
3.07 × 10 ⁻⁴												

RV20E Bolt clamping output shaft type

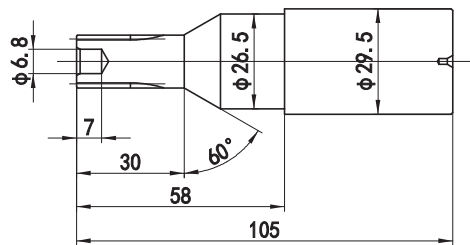
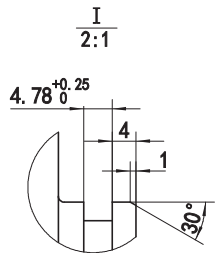
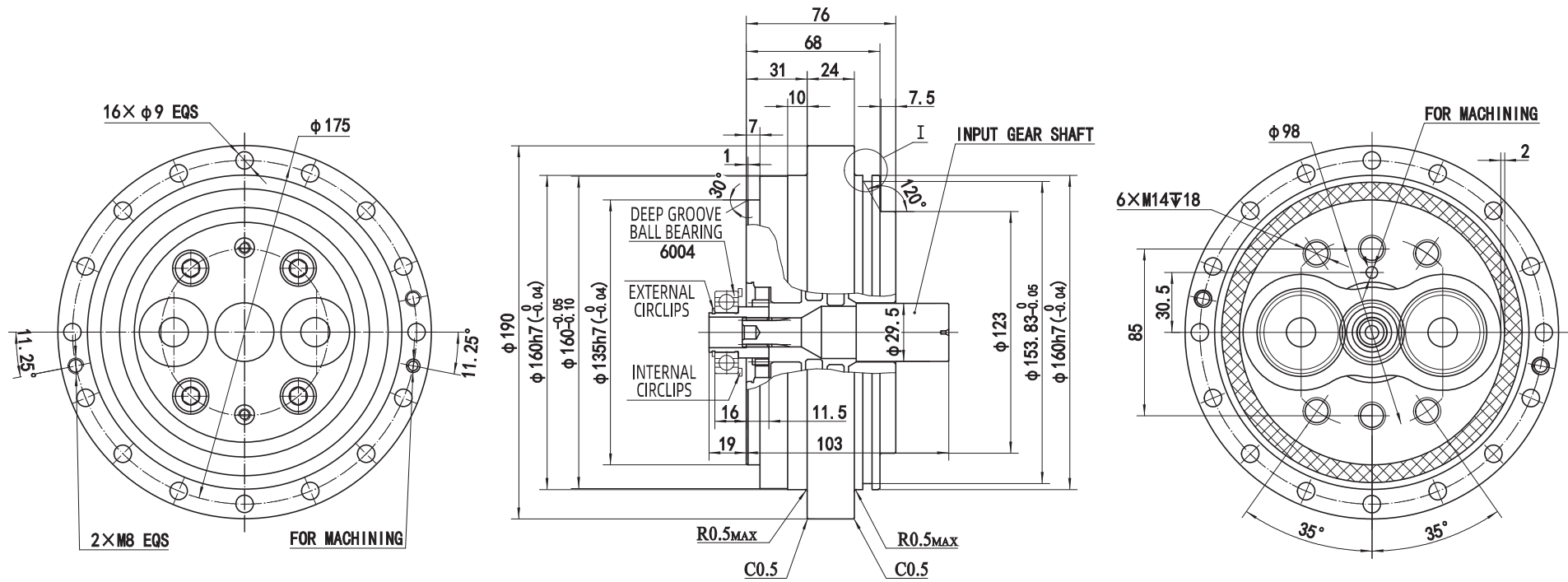


INPUT GEAR SHAFT (STANDARD TYPE A)

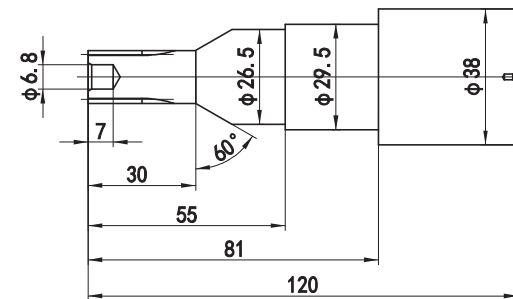


INPUT GEAR SHAFT (STANDARD TYPE B)

RV40E Bolt clamping output shaft type

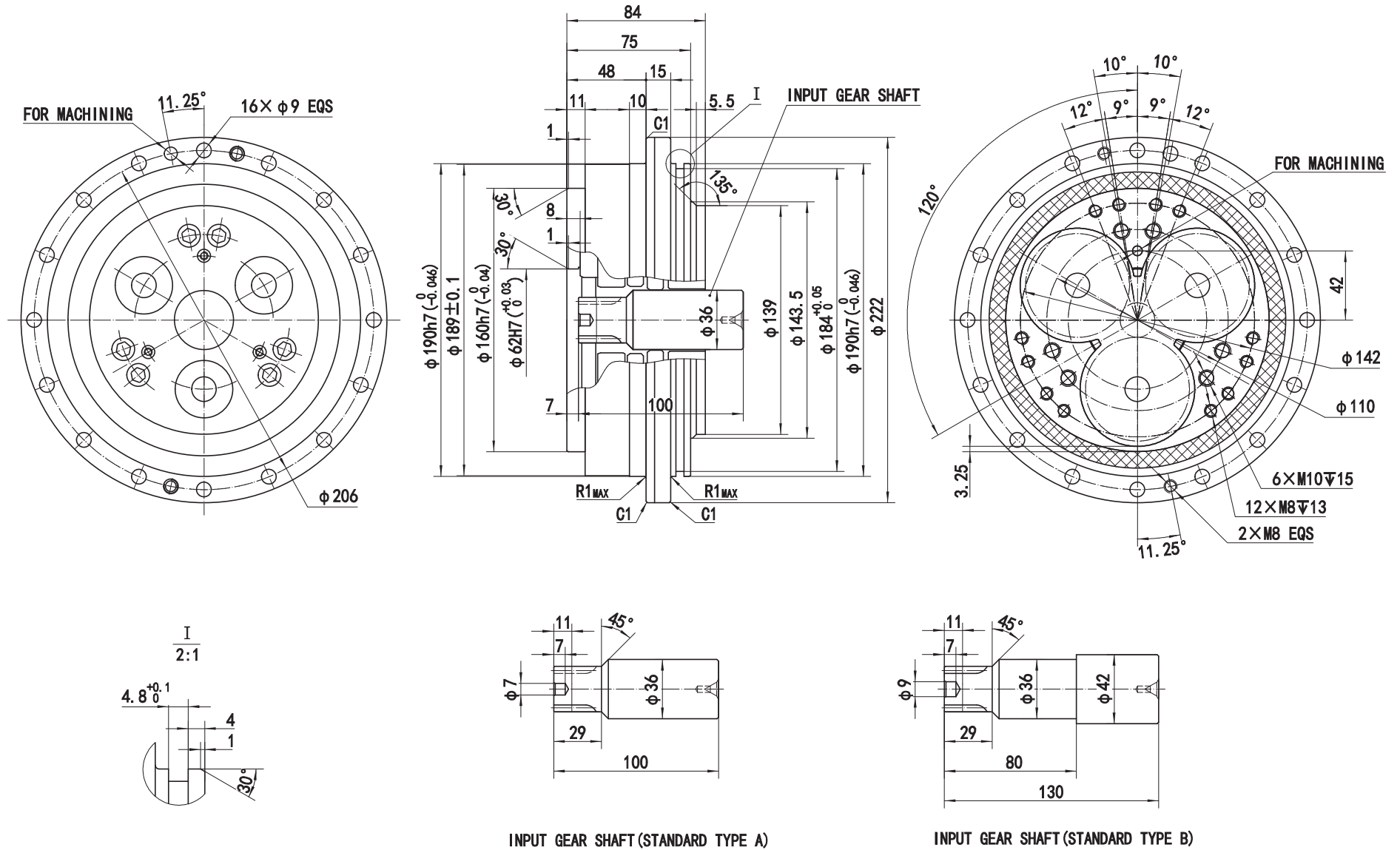


INPUT GEAR SHAFT (STANDARD TYPE A)

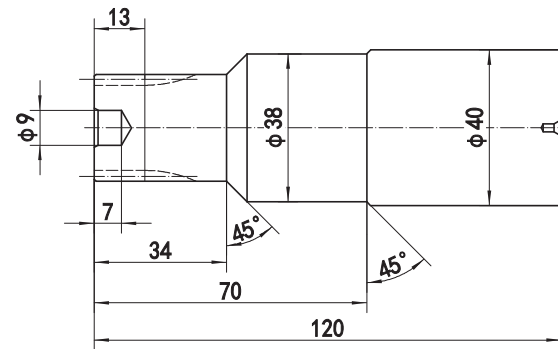
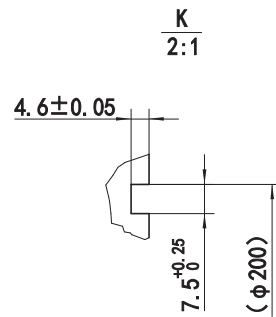
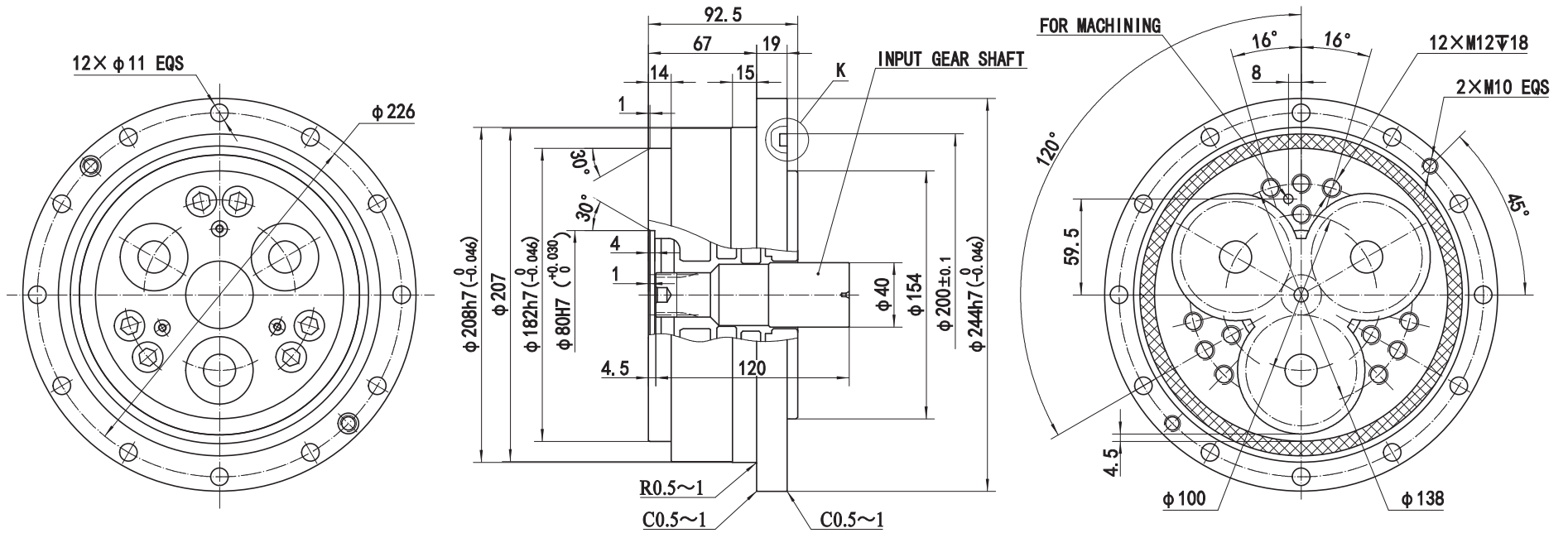


INPUT GEAR SHAFT (STANDARD TYPE B)

RV80E Bolt clamping output shaft type

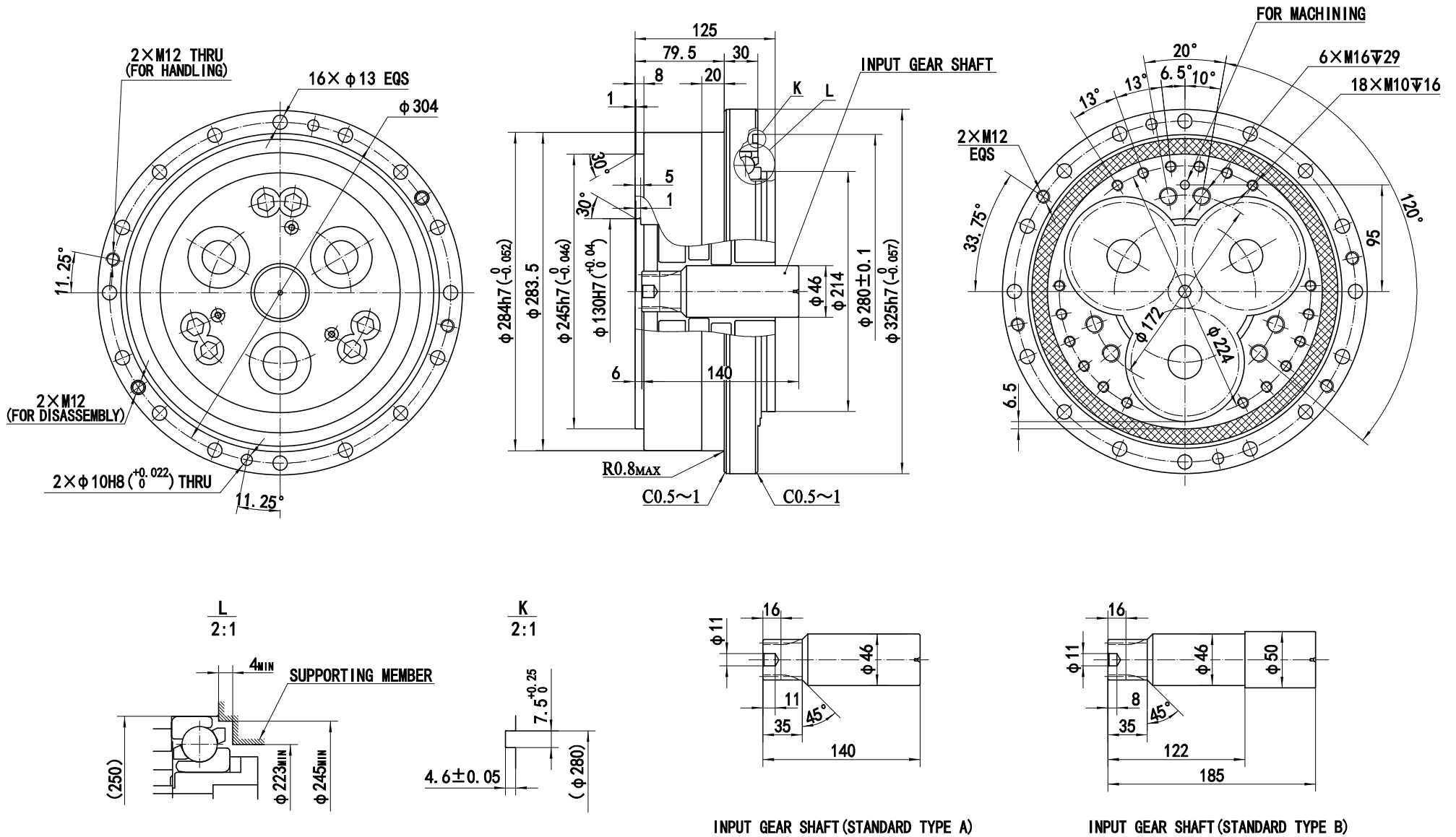


RV110E Bolt clamping output shaft type

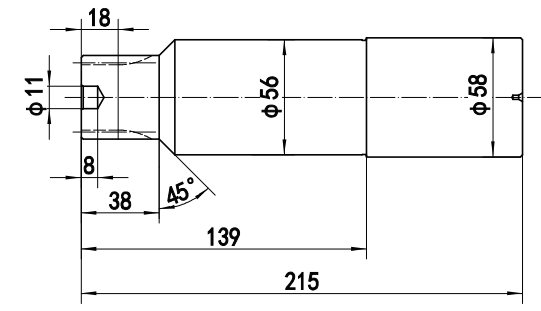
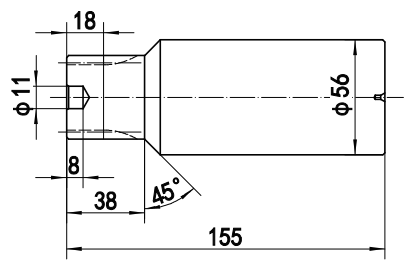
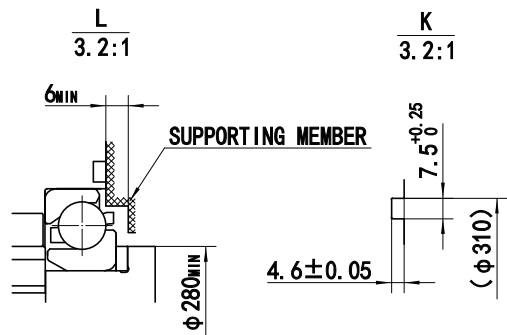
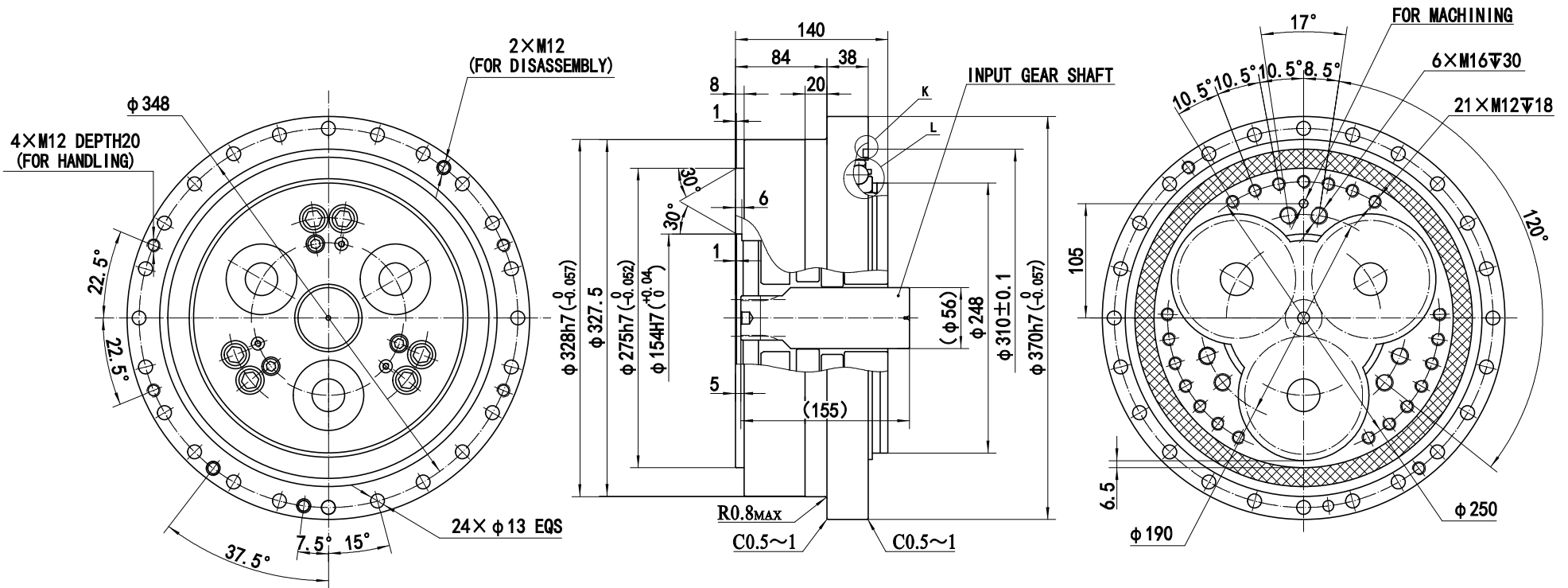


INPUT GEAR SHAFT (STANDARD TYPE)

RV320E Bolt clamping output shaft type



RV450E Bolt clamping output shaft type



INPUT GEAR SHAFT (STANDARD TYPE A)

INPUT GEAR SHAFT (STANDARD TYPE B)